



## LOEWS SAPPHIRE FALLS RESORT OPENING SUMMER 2016 PREFERRED HOTEL

Picture a colorful Caribbean hideaway where blue waterfalls cascade across lush grounds, and the invitation to cool relaxation is everywhere. Loews Sapphire Falls Resort is a brand-new jewel reminiscent of a leisurely estate in the heart of the tropics.

### GUEST ROOMS

Type	# of Rooms	Sq. Ft.
Standard Room (Queen/Queen)	470	321
Pool View Room (Queen/Queen)	191	321
Pool View Room (King)	16	321
Lagoon View Room (Queen/Queen)	220	321
Lagoon View Room (King)	20	321
King Suite	10	595
Kids' Suite	36	529
Sapphire Suite	20	851
Hospitality Suite	15	1,353
Presidential Suite	2	1,294
<b>Total Number of Rooms</b>	<b>1,000</b>	

**Connecting Rooms:** (50% of the resort guests rooms are connecting rooms)

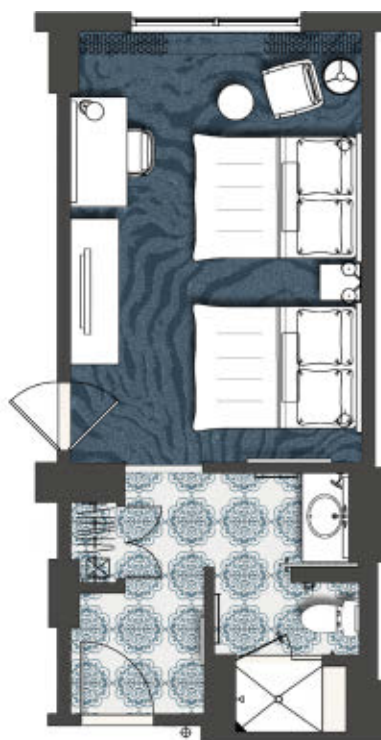
Standard View	Queen to Queen
Lagoon/Pool View	Queen to Queen & King to Queen





## STANDARD ROOM AMENITIES

- 300 thread-count, 100% cotton bed linens
- 49" flat panel television with HD channels, On-Demand in-room movies and video check-out (fees apply)
- HVAC controls connected to Smart Room technology, allowing guests to set desired temperature
- iHome clock radios with iPod docking stations
- Cuisinart single coffee pod brewer
- Complimentary\* wireless internet access in each guest room and most common areas of the hotel
- Upgrade to Premium Plus^ wireless internet access for optimal entertainment and business needs
- Telephone with voicemail system
- Mini refrigerator
- In-room safe
- Iron and ironing board
- Separate bath and vanity in most guest rooms
- Hair dryer and lighted make-up mirror
- Davines skin and body care products provided

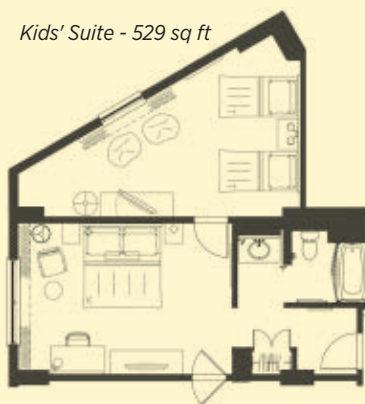


Standard Room  
Pool View Room / Lagoon View Room  
321 sq ft

\*Premium wireless access is complimentary for up to 4 devices per room for a 24-hour period 1pm to 1pm.  
^Premium Plus wireless access is \$14.95 for up to 8 devices per room and for a 24-hour period of 1pm to 1pm.



King Suite - 595 sq ft



Kids' Suite - 529 sq ft

For information on luxury suites, please call 1-888-444-2131.



## RECREATION & AMENITIES

### **Swimming Pool**

16,000 square-foot pool offers two sand areas, a children's play area with pop-up jets, a large hot tub, cabana rentals, and a water slide.

### **Calypso Game Zone – Open daily**

Features the latest video games.

### **Kalina Health & Fitness**

- The hotel's fitness center is complimentary to guests and offers equipment for cardiovascular workout routines
- Includes sauna and locker rooms
- Fitness center open daily

### **Universal Studios Store®**

Offers sundries, guest necessities, newspapers, magazines, and more, as well as Universal and Loews Sapphire Falls Resort merchandise.

### **Full-service concierge and Universal Orlando® Attraction Ticket Center**

### **Hertz car rental desk on-site**

### **Full-service business center**

Open 7:00am – 7:00pm Monday – Friday, and 9:00am – 3:00pm Saturday. Closed Sunday. Hours subject to change.

### **Resort kids' camp**

Supervised children's activity center (fees apply). Times are subject to change. Contact the hotel Concierge for reservations and more information.



## FOOD & BEVERAGE OUTLETS

---

### **Amatista Cookhouse – Breakfast, Lunch and Dinner**

Caribbean cuisine prepared in an open exhibition kitchen makes Amatista Cookhouse an instantly inviting option for any meal. Whether dining indoors or out—or in one of the private dining areas—guests of Amatista Cookhouse will feel welcomed and relaxed in this vibrant and inspiring restaurant.

### **Strong Water Tavern – Dinner**

A wall of vintage rums, your own rum specialist, a ceviche bar and a patio overlooking the lagoon combine to make Strong Water Tavern an exceptionally cool and stylish watering hole. Featuring tapas style dining options with rum tastings, this is a true destination lounge in the heart of an island jewel.

### **Drhum Club Kantine – Open daily**

Nestled within the lush grounds of the pool, Drhum Club Kantine offers sun-seekers a delightful menu focusing on fresh seafood and taste-tempting tropical drinks. The adjoining fire-pit area, awash in the rhythms of the islands, is the perfect spot to indulge in an afternoon or evening libation.

### **New Dutch Trading Co. – Open daily**

New Dutch Trading Co. is the grab-and-go option for families who want to stock up before heading off on their adventures. With ready to go meals, beverages, fresh-baked breads and ice cream, this is the stop for on-the-go snacks, meals and supplies.

### **24-Hour Room Service allows guests to eat in the privacy of their room.**

Restaurant hours subject to change without notice.